



ON-LINE AUCTION SALE

February Engineering Collective

By order of:
Various Aerospace Companies, Precision Engineers etc

AUCTION DATE: FRIDAY 28th FEBRUARY 2025



VIRTUAL / PHYSICAL VIEWING: Tuesday 25th February 2025 - by appointment only
At: PP Saleroom, The Grange Offices, Aunby, Stamford, Lincolnshire, PE9 4EE & other UK Sites.



Peaker Pattinson (Auctioneers) Ltd
The Grange Offices, Aunby, Stamford, Lincs, PE9 4EE England
Tel: +44 (0)1778 590111 Fax: +44 (0)1778 590730 Email: info@ppauctions.com



www.ppauctions.com



ON-LINE AUCTION

CNC / MACHINE TOOLS / SHEET METAL

Daewoo Mynx 550 CNC VMC, Fanuc Series 21i-MB control, swarf conveyor, Nikken 4th axis, 30 tool ATC (2005)

Harrison Alpha 400 CNC lathe, 15-2500rpm, Harrison GE Fanuc control, 195mm CH x 1250mm b.c., s/n A30268 (1996) (no display)

Excel PMTM2V turret milli, 70-4200rpm, powerfeed, 1240x230mm table, DRO (dismantled) (1997)

Colchester Chipmaster 5x20 lathe, 35-3000rpm,

143mm CH x 508mm b.c. with equipment
Colchester Bantum gap bed lathe, 6 1/2" CH x 20" b.c., 54-1200rpm with 3 jaw chuck

Engineer Series BS150 X2000 150mm horizontal belt lisher with CT-502H extraction unit
6" lisher & disc sander on pedestal base. Pedrazolli pull down saw

IMET Perfect 250 pull down chop saw, 52/104rpm on metal stand (2005). Startrite Volant 24 vertical bandsaw, blade weld attachment, 19x19" table. MEP Scorpio 300 pull down chapsaw (spares or repair - vice casting broke)



PLEASE CONTACT THE AUCTIONEERS TO REQUEST A VIRTUAL / PHYSICAL AUCTION VIEWING.

ON-LINE AUCTION

CNC / MACHINE TOOLS / SHEET METAL Continued

W Canning centreless polisher, 28mm max capacity (*spares or repair*)

Qty small tooling / inspection inc: HSS end mills, slot drills, Int 40 taper tools holders, tool sleeves / holders, reamers, rippers, Eclipse 10x5" demagnetiser, Mercer etc magnetic bases, clamping sets, long series drills, machine vices, parallels, telescopic gauges, sine table etc

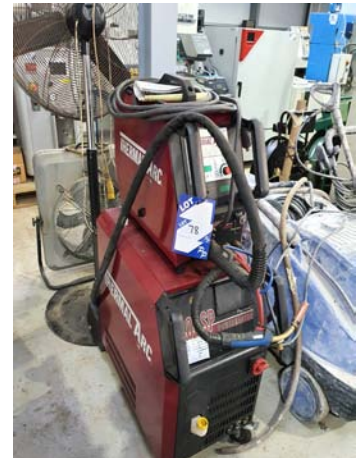
Pearson 8ft x 375ms capacity powered guillotine, blade gap adjustment, front supports, power back gauge

Kemper B32000002 extraction unit, 1.5kW, 1300m3/hr flow rate (2002) on 2800mm high stand

Kemper 64121 fume extraction unit, 0.75kW, 1200m3/hr flow rate (2012)

British Federal 50kva spot welder, 24" throat

Thermal Arc Powermaster 400SP water cooled multiprocess MIG welder, 400A with equipment



LABORATORY / INSPECTION

3P Innovation laboratory coating machine, touch screen control (2015)

**MORE EQUIPMENT
STILL BEING LOTTED
- CONTACT THE
AUCTIONEERS FOR
FURTHER DETAILS**



ON-LINE AUCTION

LABORATORY / INSPECTION continued

Spectrographic Ltd ML-MA mounting press, 40mm diameter, 2000W (2012)
Struers RotoPol-22 double disc polisher / grinder, 250mm dia wheel, Struers RotoForce-4 base
Kemet (Metkon) Metacut 251 abrasive cutter, 2800rpm, 250 & 300mm dia blade
Binder KBF240 2.1kW electric laboratory oven, 70degC temperature, 650x400mm shelf (2016)
Thermo Scientific HERATherm OGH 180 electric oven, 330degC, 420x560mm shelf size (2016)
Thermo Scientific Heracell 240i CO2 incubator, 240v, 6 compartment
Mini table top warming glass fronted oven, 0-140degC temperature range
Heraeus Instruments H518 Class II laboratory fume hood cabinet, 1800x650x630mm
Heidolph rotavac vario pumping unit, 1.7m3/h, 5.0mbar with Heidolph rotary evaporator heating bath, Fryka Umlaufwhler rotary evaporator system & Heidolph rotary evaporator base Hei-VAP, 1400W etc (2016)
Lauda RM6T refrigerated circulating bath. Rietschle vacuum pump with 2x vacuum vessels
Norvic Grade B granite surface slab, 610x610mm. Granite surface table on steel levelling base, 900x600mm.



FACTORY PLANT / MISCELLANEOUS

BMW 520d SE black saloon car, 1995cc diesel engine, 6 speed manual gearbox, 142,560 miles, MOT April 2025 (2011)
Mercedes 313CDI Sprinter panel van, 2143cc diesel engine, white, 6 speed manual gearbox, 130,800 miles, MOT December 2025, 62reg



ON-LINE AUCTION

FACTORY PLANT / MISCELLANEOUS

Johnston type 142A 101T diesel factory / road sweeper (2007)

Freddy mobile coolant remover / pump, 500ltr capacity (1996)

(new head & parts fitted Feb 2018)

USF Vacublast International Ventus 92PR single head bead blast cabinet with reclaim & extraction unit (2002)

Vacublast International Ventus 92S single head bead blast cabinet, s/n 4239-00-00 (1995)

Linde L12 electric pallet truck, 1200kg capacity, 3370mm max lift height, 2192hrs with charger (2014)

BT Levio LPE200 electric pedestrian lifter, 2000kg cap with charger (2016)

OKS FG93251V galvanised air receiver, 1000ltr capacity (2019)

Multivac C300 mobile vacuum packing machine (2009)

Numatic NNV-2001 Berti vacuum cleaner, 240v, 1100W.

Numatic WVD2000-2 240v vacuum cleaner. Metabo ASA 1202 industrial hoover, 240v.

SWF FNU electric chain hoist, pendant control, 5000kg cap (2012)

Sealed Air Speedy Packer Insight foam in a bag packaging system (2014)

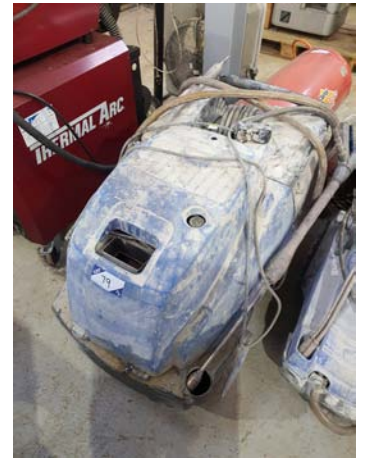
Instapak twin vertical moulding station on wheels. Freestanding 240v industrial fan. Raille spark detection system inc: pump, control panel, tank etc. Rexroth hydraulic power pack. 6x Ansell Optilux LED factory lights (boxed & unused)

Clarke Power CPB4000 single phase mobile generator with Briggs & Stratton 8HP petrol engine

Lincat digital electric water boiler with stainless steel serving table, 980x500mm

Nilfisk Alto Neptune 4 steam cleaner. Nilfisk MC6P-250/1100 jet wash. 2x Bott 1500x750mm grey metal frame benches with built in drawer units. Qty various size stainless steel tables & cupboards

Clarke Devil 3150 & Clarke Devil 3155SS gas factory space heaters

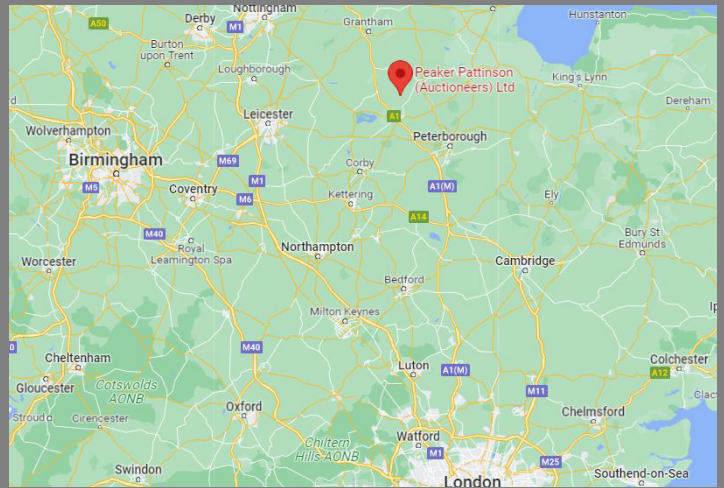
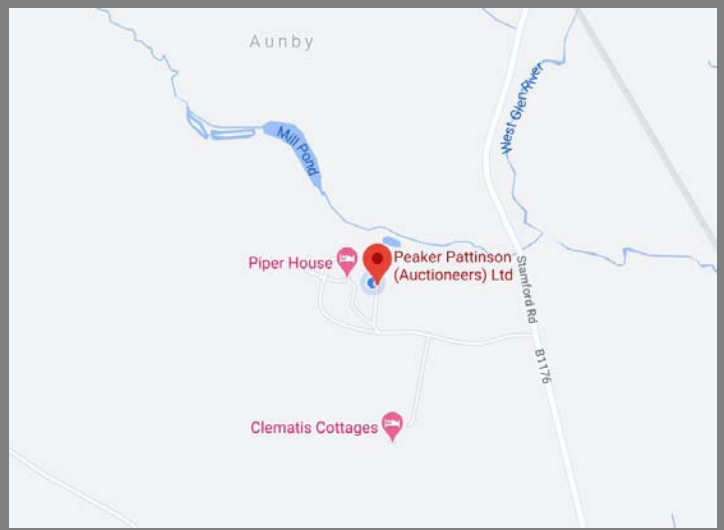
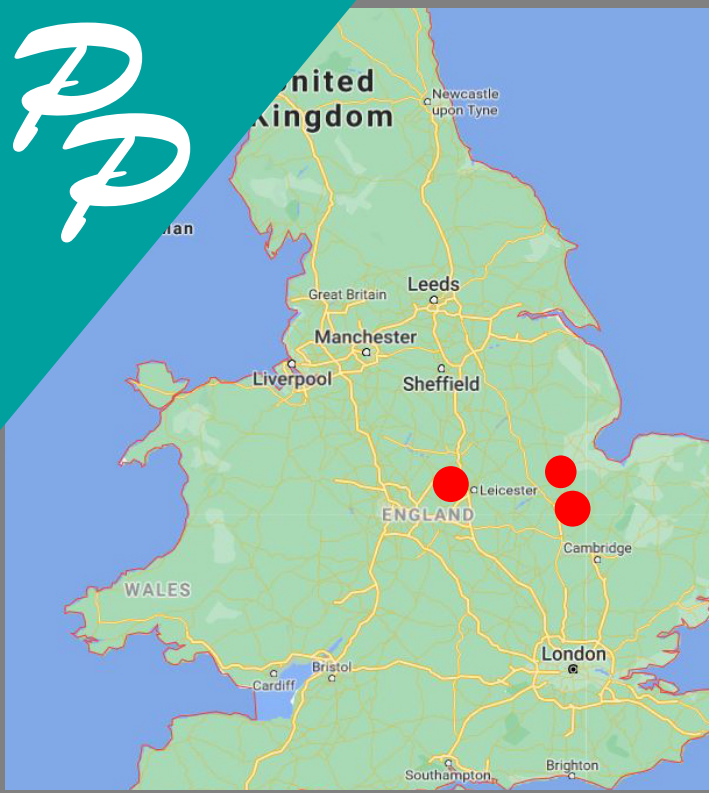


ON-LINE AUCTION

FACTORY PLANT / MISCELLANEOUS

Instanta CPF120 boiling water dispenser, 240v. Burco BC TSCNV01 conveyor toaster, 240v
Foster Gastronorm Supra stainless steel twin door under counter fridge
Electrolux stainless steel blast cabinet. Hobart 305GB Bonnet gas high speed steamer (2017)
THC12ES stainless steel double door multi shelf warming cabinet, 1.9kW
Hobart FD4/1501 stainless steel electric garbage disposer
Hobart AUPT-10A double basket stainless steel dishwasher, 500x500mm basket
Bjet Objet 30 3D printer with equipment (2011) (spares or repair - hard drive fault)
2x fork attachments, lifting jibs. Ingersol Rand TMS air dryer.
Clipper Junior concrete table saw on mobile base, 110v inc: 5kva transformer.
Qty various Telemecanique Canalis KS buzz bar sockets / boxes.
Steinel HG2320 heat gun, 240v, Makita HR1820 110v drill, Hitachi 110v hammer drill.
3x Signode plastic bonding reel trolleys. Onguard X4 bike 'D' lock, Luma Solido U85310 'D' lock, 95x310, Kryptonite Evo Series 4 'D' lock (unused)





VIRTUAL / PHYSICAL VIEWING:
TUESDAY 25th February 2025
 - by appointment only

At:

PP Saleroom, The Grange Offices,
 Aunby, Stamford, Lincolnshire, PE9 4EE.

At:

APL, 6 Stapledon Road, Orton Southgate,
 Peterborough, Cambridgeshire, PE2 6TB

At:

PTE, Lovell, Lichfield Road Industrial Estate,
 Tamworth, Staffordshire, B79 7TA.

Railway Station: Stamford (3 miles)
Hotel: The George Hotel - Stamford
+44 (0) 1780 750750



Buyers premium of 18% + VAT (at current UK rate) will be charged in addition on all lots.
 (Exported items: Applicable VAT may be refunded on production of satisfactory shipping documents)

**PHOTOGRAPHIC IDENTITY, ADDRESS
 & NATIONALITY MAY
 BE REQUIRED FOR VIEWING**

**Peaker Pattinson (Auctioneers) Ltd reserve
 the right to sell equipment prior to the sale.**

**PLEASE NOTE: ACCEPTANCE OF
 OFFERS AND SUITABILITY OF
 PURCHASERS FOR SOME OR ALL OF
 THE EQUIPMENT IS AT THE EXCLUSIVE
 DISCRETION OF THE VENDORS.**

IMPORTANT NOTE:

All information supplied by the auctioneer in promotional material, catalogues etc. is provided in good faith but may not be correct. No liability is accepted by the auctioneer or their Clients for incorrect information and it is the responsibility of the purchaser to satisfy themselves by physical inspection with regard to: General description, measurement, location, age, general conditions, environmental or health and safety conditions, removal requirements etc.

All purchasers who do not inspect are deemed to have waived the right to this facility and all sales are deemed to be 'as inspected' and 'as is, in situ.'

Any bid is accepted on the above basis only and all terms are governed by English law.

Peaker Pattinson (Auctioneers) Ltd

The Grange Offices, Aunby, Stamford, Lincs, PE9 4EE England
 Tel: +44 (0)1778 590111 Fax: +44 (0)1778 590730 Email: info@ppauctions.com



www.ppauctions.com

