



ON-LINE AUCTION SALE

By order of:

Radius Aerospace UK Ltd

due to the re-organisation of their manufacturing facilities



ON-LINE AUCTION DATES: THURSDAY 25th & FRIDAY 26th APRIL 2024



VIEWING: TUESDAY 23rd APRIL 2024 - by appointment only

AT: The Works, Whitchurch Road, Shrewsbury, Shropshire, SY1 4DP.

Peaker Pattinson (Auctioneers) Ltd

The Grange Offices, Aunby, Stamford, Lincs, PE9 4EE England
Tel: +44 (0)1778 590111 Fax: +44 (0)1778 590730 Email: info@ppauctions.com



www.ppauctions.com



ON-LINE AUCTION

PLASMA SPRAY

PlasmaTechnik AG manual plasma spray booth, Sulzer Unicoat process control, PSU, power chiller & extraction (2005)

Sulzer / Plasma-Technik automatic plasma spray booth with ABB robot, Sulzer Unicoat process control centre, Plasma gas management centre, power supply, powder chiller & extraction (2005)

Sulzer Metco Plasma / HVOF thermal spray system inc booth, ABB robot, Matticoat operators desk, power supply, plasma gas management, power feeder and chiller, extraction with load / unload Kasen swing jib (2009)



CNC GRINDING

Schautd Mikrosa type CERES 320 CNC universal grinder, Siemens Sinumerik control (2002)

2x Magerle MGC080 5 axis CNC grinder, Siemens Sinumerik control with coolant, filter & chiller (2001 & 2002)



ON-LINE AUCTION

CNC GRINDING

2x Magerle MGC080 5 axis CNC grinder, Siemens Sinumerik control with coolant, filter & chiller (2001 & 2002)

Magerle MGC-130-G5 5 axis CNC grinder, Siemens Sinumerik 840D control, chiller, filtration, extraction (1998)

2x Magerle MFP-125-50 3 axis CNC grinder, 1250x500mm bed, Siemens Sinumerik control with coolant, filter & chiller (2002)



CNC MILLING / TURNING

2x Mazak Variaxis 730-5X II CNC 5 axis machining centre, 40 tool ATC, 630x500mm table, Mazatrol Matrix control (2008)

DMG DMU 80P 5axis CNC machining centre, 630mm dia table, Heidenhain control (1997)



ON-LINE AUCTION

CNC MILLING / TURNING

Deckel Maho DMU160P Hi-Dyn CNC 5 axis machining centre, Heidenhain control, 60 tool ATC (2003)

Maho MH1200W CNC production mill, 1000x800mm table, Maho CNC 415 control (1993)

Bridgeport VMC 1000XP CNC VMC, Heidenhain control, 1150x570mm table (2003)

Bridgeport VMC 100022 CNC VMC, Heidenhain control, 24 tool ATC, 1150x580mm table (2002)

Bridgeport Series II Interact 4 CNC vertical milling machine, 960x380mm table, Heidenhain TNC155 control



CNC EDM

Chmer AH64C CNC EDM, 470x630mm table, Chmer control (2012)

AGIE Spirit 4C-Axis & AGIE Spirit 3C-Axis CNC EDM, 34x22" table with ICS chiller (2007)



CONTACT THE AUCTIONEERS TO REQUEST A CATALOGUE / AUCTION VIRTUAL VIEWING

ON-LINE AUCTION

CNC BORING

Webster Bennett CNC 54" elevating rail vertical borer, GE Fanuc Series 01-TC control (1997) (retrofit 2007)

MACHINE TOOLS

Boring / Drilling

Webster Bennett 72" vertical borer, elevating rail, 5.2-117rpm, Sony DRO
Webster Bennett 48" elevating rail vertical borer, 2.25-50rpm, Copy attachment, Sony DRO
2x Webster Bennett 48" vertical borer, fixed rail, 4.5-100rpm, Sony / Newall DRO



MACHINE TOOLS

Boring / Drilling

Kitchen & Wade 80" radial arm drill, 27-900rpm, special rotary jig
Asquith ODI MK2 16172 radial arm drill, 40-2040rpm, 36x34" box table
Archdale 36" radial arm drill, 64-1627rpm, 36x22" RF table
Herbert 4 spindle in-line drill, 46x16" RF table, 170-1455rpm (power 1 spindle)
2x Fobco Star single spindle drill, 475-4260rpm, 11x11" RF table



**CONTACT THE
AUCTIONEERS TO
REQUEST A
CATALOGUE /
AUCTION VIEWING**

ON-LINE AUCTION



MACHINE TOOLS

Grinding / Linishing / Polishing

Jones & Shipman 540 surface grinder, Filtermist extraction
Warner Swasey (Norton) external grinder with extraction, Marposs gauging
Churchill HBX internal grinder, Newall DRO with Filtermist extraction



Wotan & Zimmermann SFRW630 ring grinder, 630mm dia mag chuck with Filtermist extraction
Snow 20" horizontal rotary grinder. Lumsden 4 head grinder. Abwood twin wheel grinder / surface grinder
DGP Pirahna III tungsten electrode grinder, 240v (**circa 2020**). Abwood DE lapper & 8" DE grinder. Hopkins & Thompson
D/E grinders. RJH Oldvbr linisher with extraction, 50mm wide (**2006**). 50mm horizontal linisher with dust extraction.
2x RJH Morrisflex 50mm linisher (**2007**)
2x Morrisflex 50mm wide horizontal linisher on extraction unit (**1997**)
RJH 100mm horizontal bench type belt linisher with Sealey extraction unit
Twin wheel DE linisher & RJH DE polisher with Kemper System 8000 filtration unit (**2003**)
3x Morrisflex model 106S 50mm belt linishers (**1997-98**)
Powered double ended polisher with Kemper 80040 extraction unit (**1999**)
Single wheel powered polisher with Kemper extraction unit (**2003**)
2x BO Morris & RJH double ended polishers with Kemper System 8000 filtration unit (**2003**)
Selecta DE polisher & DE grinder with Kemper System 8000 filtration unit (**2003**)



ON-LINE AUCTION

Milling / Turning

Bridgeport turret mill, 50-3750rpm, power feed, 49x9" table, Heidenhain DRO
Colchester Triumph 2000 TR toolroom lathe,
Anilam mini wizard DRO, 25-2000rpm, 7.5" CH x 50" b.c.
Swift type 16.V5 heavy duty gap bed lathe, 4-230rpm, 16" CH x 100" b.c.
DSG type 18x60 production gap bed lathe, Newall DP7 DRO, 7.5-600rpm



CONTACT THE AUCTIONEERS
TO REQUEST A CATALOGUE /
AUCTION VIRTUAL VIEWING

Pressing

2x Clearing DH-150-75-42 150 ton hydraulic press, 30" stroke, 42x42" bed.
Bliss 21B inclinable mechanical press, adjustable stroke.



Taylor & Challenor STDP No.205 mechanical press, 30" dia bed.
Wilkins & Mitchel 535 eccentric press, 34x30" bed, adjustable stroke.
Qty various Norton, Sweeney & Blocksidge etc bench type flypresses



ON-LINE AUCTION

SHEET METAL / WELDING

Baileigh RM1270/90HR powered bending rolls, 300mm wide (2008).
Eckold KF330 metal former (2001).
Zenith PBB1270/ZA box & pan folder (2015).
Morgan Rushworth TRTS 1300/141MW powered pyramid rolls, 3.2mm capacity.
Frost type 493 powered rolls, 520mm wide.
Rhodes powered nibbler & hand shear on base.
Pullomax manual metal forming roll.
2x Edwards rolling machine. Edwards 42" mechanical rolls. Frost 491 powered roller / swaging machine. 48" powered rolls.



ON-LINE AUCTION

SHEET METAL / WELDING Continued

ASC bench type section bender / ring roll machine with forms (2016).

Mini Grott expanding machine. Schlatter GN32737722 130kva spot welder, 1050mm throat (1984).

British Federal 60kva spot welder. Holden & Hunt spot welder, British Federal control.

2x British Federal heavy duty spot welder, 36" throat (1990). 3x manual Murex / Bode welding manipulators / positioners.

4x Bode welding station with Messer Griesham Euromatic tig welder & wirefeed. Bode tig welding arm with Messer Griesham Euromatic 35 welder & tig wire feed unit.

3x Bode 21 VP/2, 2VP2 etc powered manipulator, 1200mm diameter. Bode welding station with Messer Griesham Euromatic tig welder & wirefeed. 4x Bode SV17 etc powered welding manipulator, 24" dia. Bode mobile welding arm with Messer Lincoln Euromatic 35-2 tig welder & wire feed unit



2x Fronius MagicWave 3000 JobGF AC watercooled TIG Welder

Circumference welding jig. Donald Ross 25H mobile 42" manual welding manipulator

HSPP welding chamber with Messer Griesham Euromatic 25-2 tig welder

Miller Syncrowave 250 AC/DC welder. Miller Maxstar 200 welder

Miller Dynasty 300 DX tig welder with Hydramate 2 cooling unit

Welding process area inc, welding booth, extraction, benches, racking etc

Plasma booth inc, 2x thermal dynamic PAK master 50XL plasma cutters, 2200x1050mm cutting bed etc

Twin welding booth with Selco Genesis 240 tig welder, Fronius FLC2500 tig welder, Kemper extraction etc



ON-LINE AUCTION



EDM EQUIPMENT / LASER / ROBOTIC WELDING CELL

MJT spark eroder, 600x400mm bed, Phase 2 Pulse Tech control, Heidenhain DRO (1998)

Charmilles Form 4LC Spark Eroder, Arbicut System, Charmilles control, Newall DRO

Chmer AH53C EDM hole driller, Chmer EDM control, 630x310mm table (2012)

Charmilles FORM2LC EDM, Anilam DRO, Charmilles control (2001)

2x TEK 4 3g multi hole drill EDM, 350x250mm table (2006). 2x 600 Centre EDM, 50F2 control,

25x15" table (1998). MJT Midi tech EDM, Heidenhain DRO, Phase 2 phase tech control (1998)

Agie Agietron Compact 2 EDM, Agietron control, 600x450mm table with chiller unit & Filtermist

(1998). MJT Duo-MULTI-Tech twin head EDM machine (1997). MJT EDM Machine, Heidenhain DRO, 400x250mm table.



ON-LINE AUCTION

EDM EQUIPMENT / LASER / ROBOTIC WELDING CELL

Wickman 1-80HC EDM, MC75-3M controller. Moss twin head EDM machine, 24x12" table, Filtermist

2x Agie E10X Mondo 50 EDM, Agie Futura control. Agie Mondo Star 50 EDM, Agie Futura IV control

Lumonics Laserdyne 550 single head laser, Lumonics control (1996) with Kemper Plasma Fill welding fume extraction unit (2020)

Lumonics single head laser, Laserdyne system 94W laser process control (1997) with Kemper Plasma Fill welding fume extraction unit (2020)

4x MJT Delta laser, 30kva, Heidenhain control (1993-1996) with ICS TAE Evo 051 chiller unit (1997-2013)

MJT Tornado laser P50 Heidenhain control (2001) with Parker Hiross ICE022 chiller unit (2008)

M&T Welding Systems robotic welding cell with Almega AX-V16 6 axis robot, 2x 700mm dia powered manipulators, Thermal Arc WC100V plasma welder, Welding Control arc length controller etc, s/n MT6020446 (2004)



ON-LINE AUCTION

INSPECTION / LABORATORY / CRACK DETECTION

Zoller Smile 420 tool presetter (2017).
Nikken E450 tool presetter (2005).
Nikken Wasp tool presetter (2006)
Eurowa Preset 2D Basic tool presetter, Heidenhain DRO (2001)
Nikon SMZ800 stereo microscope on bench.
Pexit shadowgraph, 900x200mm table
Zwick Roell ZHV30 low load Vickers hardness tester (2020)
Indentec Zwick Roell ZHR 8150BK Rockwell hardness tester (2017)



Mitutoyo SJ-410 surface roughness tester with digital control & printer
2x Olympus Delta BX41M-LED laboratory microscope.
Olympus S2X7 microscope with light source.
Buehler Simplimet 1000 automatic mounting press.
Instron 3382 tensile tester, 100KN load cell
Kemet Servocut 401-MM laboratory cutting machine (2010)
Thermo Scientific Heratherm OGS60 laboratory electric oven, 250degC (2019)
4x Crown Windley granite surface table &
5x Trimos digital height gauges
Saracen electric drying oven, 70 degC temp, roller feed



ON-LINE AUCTION

INSPECTION / LABORATORY / CRACK DETECTION

Continued

2x Air Technique electric fan assisted box oven, 325degC, 30kW (2011)

Single door electric fan assisted drying oven.

Barlow Whitney fan assisted electric oven, chart recorder.

Monmonth Circular 1400 fume cabinet

Fumtech FSL electric fan assisted class 4D furnace, 800-1100degC

Crack detection line with penetrant tank, spray wash, oven & developer booth

Fluorescent inspection room with extraction, black light lamps, UV lights etc



**MORE EQUIPMENT STILL
BEING LOTTED - CONTACT
THE AUCTIONEERS FOR
FURTHER DETAILS**



ON-LINE AUCTION

FACTORY PLANT / MISCELLANEOUS

SCR Comp SCR150V-8 rotary packaged variable speed air compressor, 110kW (2017)

SCR Comp SCR75DV-8 rotary packaged air compressor, 55kW (2016)

Karcher HDS6/10/4C steam cleaner (2016). Cardev CMS coolant mixing station (2000)

Genster 40ft metal shipping container (1991) & similar 20ft container

Guyson Euroblast 10SF System blast cabinet with extraction (2015)

2x USF Ventus bead blast cabinet with shot reclaim & extraction (2001)



3x Parker Hiross Hyperchill chiller units (2x 2008, 1x 2011), Conair Churchill chiller unit, 2x HPC SK26 compressors, 3x air receivers etc Abrasive Developments AS20 autoflow dry honing unit with DCE extraction.

Hodge Clemco Enviraclean Series 1000 media blast cabinet with reclaim system (2009)



ON-LINE AUCTION

FACTORY PLANT / MISCELLANEOUS Continued

Mecwash Midi 400 aqueous basket parts washer, Allen-Bradley control (2007)

PDJ model PJDD-2000-1000-R-2.2 filtration air bench (2018). 2x Lakestyle extraction work benches.

Extraction bench with Donaldson Torit Downflo extraction system. Various metal partition offices.

Vapourmatt Vapourmaster 1315 water blast cabinet, twin glove (1998)

Ceratax VBTA600 vibratory rotary bowl in soundproof enclosure. 2x Hisonic heated

cleaning tanks, 240v. Twin water washing tanks in enclosure. 2x Nilfisk vacuum cleaners

ESAB OrigoVac Cart mobile fume filtration unit (2018). Dustraction extraction unit (1999)

Donaldson model SME36-R extraction system, 22kW (2008)

Kemper 90100100 15kW air extraction unit with air handling unit, 10000 Mn3/hr (2003)

Kemper System 9000 Type 998700803 extraction system (2003).

Bulk water tank cooling system with pumps & MTA TAE020 chiller (2004)



**MORE EQUIPMENT STILL BEING LOTTED - CONTACT THE AUCTIONEERS FOR FURTHER DETAILS
CONTACT THE AUCTIONEERS TO REQUEST A CATALOGUE / AUCTION VIRTUAL VIEWING**

ON-LINE AUCTION

FACTORY PLANT / MISCELLANEOUS Continued

Pryor G7 DOT marking machine (2017). 3x GPT pneumatic riveters on benches (to 2019)

Pryor Marktronic Multidot 2068-2 marking machine (2005).

Bench mark 320 marking system, Telesis TMC240 keyboard. Fast tap 400 2L2500APB bench type tapping machine
Workbenches, trolleys, pallet trucks, cabinets, surface table, tooling, Freddy, tipping skips, lifters, lockers, canteen, Dexion heavy duty boltless pallet racking etc

Various sized self contained filter / fettling booths with equipment - extraction, benches, fettling tools etc

Water booth & test rig with pressure gauges, s/s tanks etc

Flashroom with chemical storage cabinet, Safety Kleen filter bench, shaker, LMS refridgerator etc (2018)

Self contained firewall soundproof inspection room with air conditioning, lights, etc. 4.6x3.5m footprint

Qty mobile forkable tipping skips, Empteezy chemical / paint / oil / coolant stores, metal & plastic chemical / oil storage trays, drip trays, Ex Rated 4 bag extraction unit, Padpack machine, wrapping area, sealers etc

Single door fan assisted electric drying oven. 4 tank sensitivity line with extraction

Twin jet wash cleaning station & hot water rinse tank



ON-LINE AUCTION

OVERHEAD CRANES / SWING JIBS

1500kg swl single girder overhead crane, Kasen 1000kg SWL electric overhead crane & Kasen 1000kg swl electric overhead crane (2016)

Hoistquip 12 pillar gantry system with Stahl 8000kg crane, remote control, 45m x 6m approx

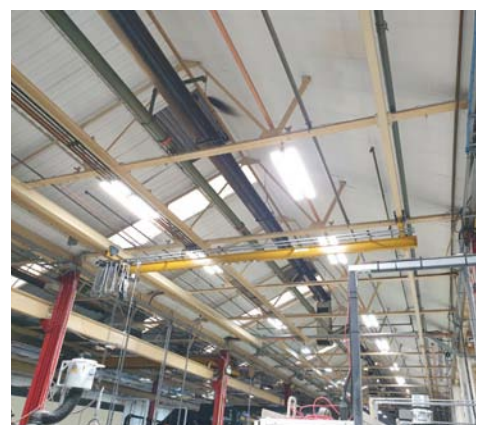
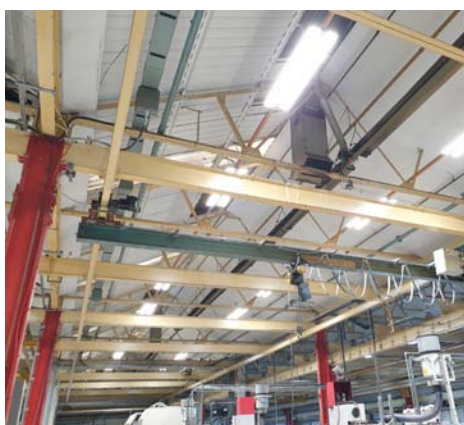
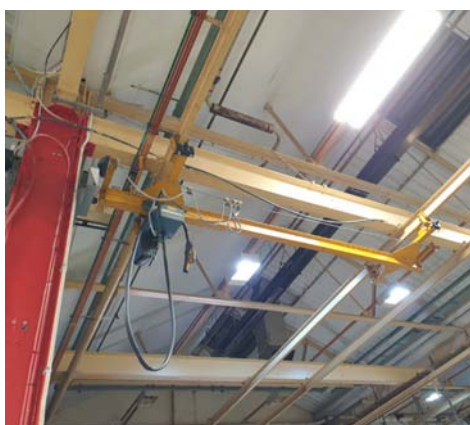
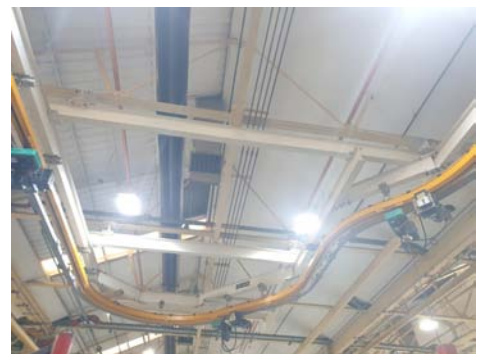
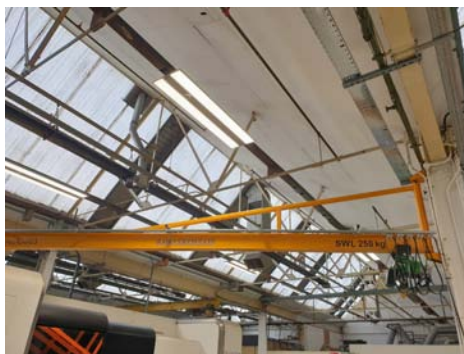
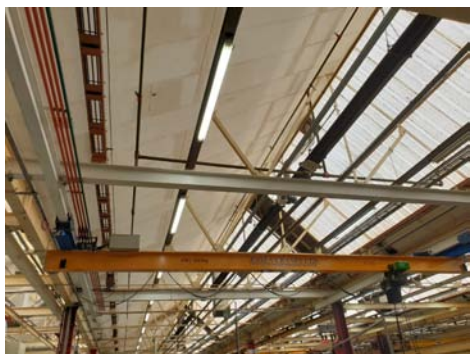
Wharton 3 ton twin girder overhead crane, pendant control, 8m span (approx)

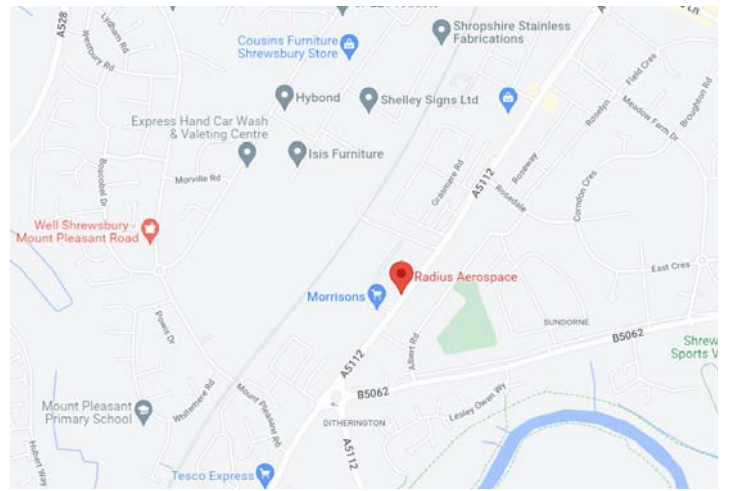
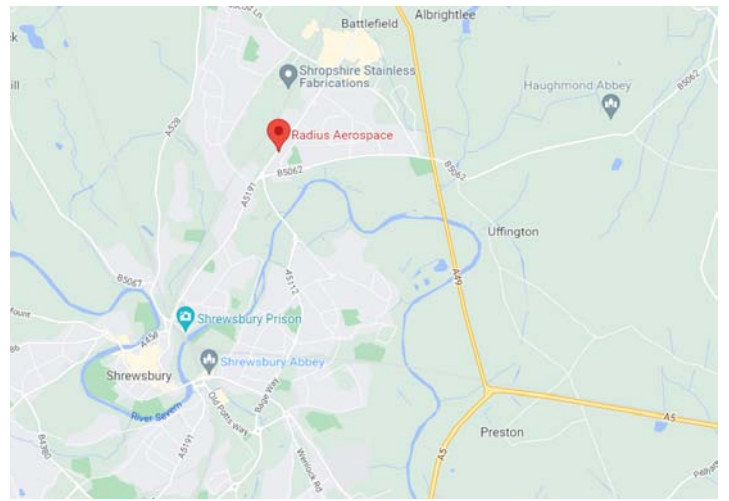
Qty OTC, Hoistquip, Kasen, Olympia etc overhead crane gantries, 125kg to 1.6ton SWL with electric chain hoists, pendant control (to 2003)

OTC 750kg SWL curved continuous loop single girder track crane with 3x Verlinde electric chain hoists

Qty OTC, Hoistquip, Kasen Cranes etc floor mounted swing jibs, 125kg to 500kg SWL with various electric chain hoists, pendant control

Qty OTC, Hoistquip, Kasen Cranes etc girder mounted swing jibs, 125kg to 1000kg SWL with various electric chain hoists, pendant control





Airport:
Liverpool (44 miles)

Railway Station:
Shrewsbury (3 miles)

Hotels:
The Shrewsbury Hotel
+44 (0) 1743 236203
The Lion Hotel - Shrewsbury
+44 (0) 1743 353107
Premier Inn Shrewsbury Town Centre
+44 (0) 333 321 9295

VIEWING: TUESDAY 23rd APRIL 2024
- by appointment only

At: The Works, Whitchurch Road, Shrewsbury, Shropshire, SY1 4DP.



Buyers premium of 15.5% + VAT (at current UK rate) **will be charged in addition on all lots**
(Exported items: Applicable VAT may be refunded on production of satisfactory shipping documents)

PHOTOGRAPHIC IDENTITY WILL BE REQUIRED FOR VIEWING
Peaker Pattinson (Auctioneers) Ltd reserve the right to sell equipment prior to the sale.

PLEASE NOTE: ACCEPTANCE OF OFFERS AND SUITABILITY OF PURCHASERS FOR SOME OR ALL OF THE EQUIPMENT IS AT THE EXCLUSIVE DISCRETION OF THE VENDORS.

IMPORTANT NOTE:
All information supplied by the auctioneer in promotional material, catalogues etc. is provided in good faith but may not be correct. No liability is accepted by the auctioneer or their Clients for incorrect information and it is the responsibility of the purchaser to satisfy themselves by physical inspection with regard to: General description, measurement, location, age, general conditions, environmental or health and safety conditions, removal requirements etc.
All purchasers who do not inspect are deemed to have waived the right to this facility and all sales are deemed to be 'as inspected' and 'as is, in situ.'
Any bid is accepted on the above basis only and all terms are governed by English law.

Peaker Pattinson (Auctioneers) Ltd
The Grange Offices, Aunby, Stamford, Lincs, PE9 4EE England
Tel: +44 (0)1778 590111 Fax: +44 (0)1778 590730 Email: info@ppauctions.com



www.ppauctions.com

